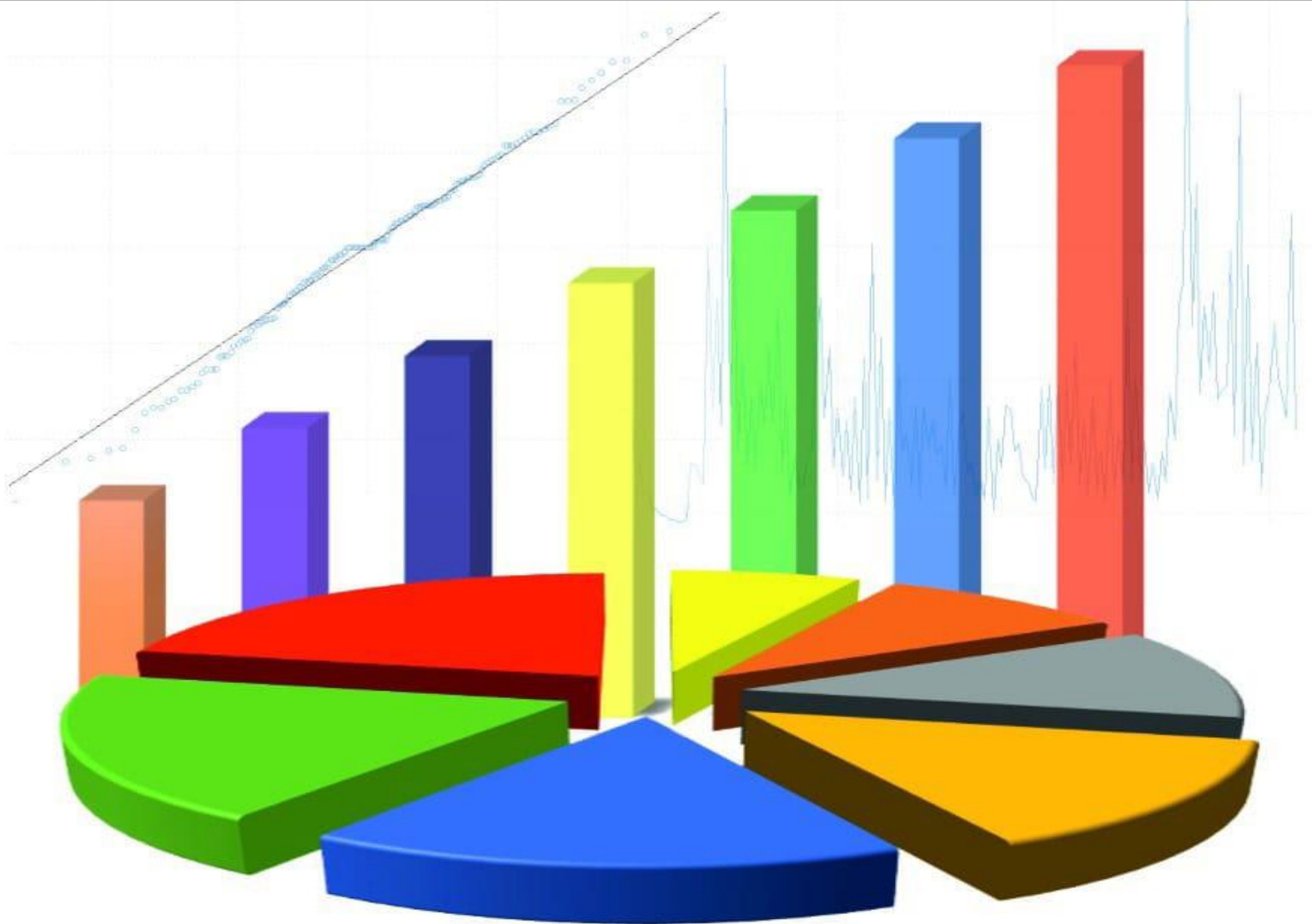


Variance

Journal of Statistics and Its Applications

P-ISSN: 2685-8738 E-ISSN: 2685-872X

Volume 5 Nomor 2 | Oktober 2023



PROGRAM STUDI STATISTIKA

JURUSAN MATEMATIKA

FAKULTAS MATEMATIKA DAN ILMU PENGETAHUAN ALAM

UNIVERSITAS PATTIMURA



P-ISSN: 2685-8738 E-ISSN: 2685-872X
Volume 5 Nomor 2 | Oktober 2023

Editor in Chief

Ferry Kondo Lembang, S.Si., M.Si
Norisca Lewaherilla, S.T., M.Si

Expert Editor Board

Yudhie Andiyana, M.Sc., Ph.D (Universitas Padjajaran, Indonesia)
Tommy Tanu Wijaya (Beijing Normal University, Beijing, China)
Dr. Arifah Bahar (Univeritas Teknologi Malaysia, Malaysia)
Prof. Dr. rer.nat. Dedi Rosadi, S.Si., M.Sc. (Universitas Gajah Mada (UGM), Yogyakarta)
Prof. Drs. Muhammad Arif Tiro, B.A., M.Pd., M.Sc. (Universitas Negeri Malang (UNM), Malang)
Dr. Margaretha Ari Anggorowati, M.T. (Politeknik Statistika, Jakarta)
Sapto Wahyu Indratno, S.Si., M.Sc., Ph.D. (Institut Teknologi Bandung (ITB), Bandung)
Dr. rer.pol. Heri Kuswanto, M.Si. (Institut Teknologi Sepuluh November (ITS), Surabaya)
Dr. Henry Junus Wattimanela, M.Si. (Universitas Pattimura (Unpatti), Ambon)
Yopi Andry Lesnussa, S.Si., M.Si. (Universitas Pattimura (Unpatti), Ambon)

Managing and Section Editor

Muhammad Yahya Matdoan, S.Si., M.Si

Copy Editor and Proofreader

Yonlib Weldri Arnold Nanlohy, S.Si., M.Si

Graphic Designer

Lexy Janzen Sinay, S.Si., M.Sc

Secretariat

Gabriella Haumahu, S.Si., M.Stat

VARIANCE: Journal of Statistics and Its Applications is an open-access journal for the scientific publication media, which published two times annually in June and December. The focuses of this journal are official statistics, biostatistics, econometrics, business, and industrial statistics, demography, time series, spatial, data mining, computation statistics, and actuarial science. The printed version of this journal is p-ISSN 2685-8738 and the online version is e-ISSN 2685-872X published on website <https://ojs3.unpatti.ac.id/index.php/variance/> by using OJS.

Published by:

Statistics Study Programme
Department of Mathematics
Faculty of Mathematics and Natural Sciences
University of Pattimura
Website: <http://matematika.fmipa.unpatti.ac.id>

Daftar Isi

IDENTIFIKASI JENIS KENDARAAN BERMOTOR DENGAN ALGORITMA CONVOLUTIONAL NEURAL NETWORKS <i>(Identification of Motor Vehicle Types Using Convolutional Neural Networks Algorithm)</i> Muhammad Athoillah, Rani Kurnia Putri	109-116
RETURN PORTOFOLIO OPTIMAL DENGAN PENDEKATAN SINGLE INDEX MODEL, TREYNOR BLACK MODEL, DAN BLACK-LITTERMAN MODEL <i>(Optimal Portfolio Return with the Single Index Model, Treynor Black Model, and Black-Litterman Model Approaches)</i> Adri Arisena, Lienda Noviyanti, Achmad Zanbar Soleh, Fajar Indrayatna	117-130
WORKFORCE GROUPING IN COMPLETING PROJECTS WITH INTERN WORK ACTIVITY LOG DATA USING K-MEANS CLUSTERING Brandon Anggawidjaja, Faizah Sari, Ahmad Fuad Zainuddin	131-138
PENERAPAN ALGORITMA ITERATIVE DICHOTOMISER 3 (ID3) DALAM KLASIFIKASI FAKTOR RISIKO PENYAKIT DIABETES MELITUS <i>(Application of The Iterative Dichotomizer 3 (ID3) Algorithm in The Classification of Risk Factors for Diabetes Mellitus)</i> Ferdina, Neva Satyahadewi, Dadan Kusnandar	139-146
PENENTUAN PREMI MURNI DI KABUPATEN KEPAHANG PROVINSI BENGKULU DENGAN MEMPERHITUNGGAN PELUANG KEJADIAN GEMPA BUMI DAN RASIO KERUSAKAN BANGUNAN <i>(Determination of Pure Premiums in Kepahiang Regency, Bengkulu Province Taking into account the Rate of Earthquake Incidence and the Ratio of Building Damage)</i> Tiara Yulita, Chaterine Theresia Lubis, Agus Sofian Eka Hidayat	147-158
ANALISIS PENYEBARAN JUMLAH KASUS PMK PADA HEWAN TERNAK SAPI DI KABUPATEN LOMBOK TENGAH MENGGUNAKAN INDEKS MORAN TAHUN 2022 <i>(Analysis Spread of Mouth and Nail Disease (PMK) Cattle in Central Lombok Regency Using Moran Index in 2022)</i> Ayu Septiani, Ristu Haiban Hirzi, Nawwarun Uyun Fikriah	159-168

MODEL REGRESI DATA PANEL PADA TINGKAT KRIMINALITAS DI PROVINSI NUSA TENGGARA BARAT DENGAN MENGGUNAKAN *FIXED EFFECT MODEL* (Analysis of Panel Data Regression Model on Criminality Levels in West Nusa Tenggara Province Using Fixed Effect Model) 169-184

Nurwahyuni, Zulhan Widya Baskara, Nur Asmita Purnamasari

CLASSIFICATION OF THE GEOCHEMICAL COMPOSITION OF METEORITE OF PUNGGUR (ASTOMULYO) BY k-NEAREST NEIGHBOR ALGORITHM 185-192

Triyana Muliawati

MODEL GABUNGAN (ANSAMBEL) SARIMA DAN JARINGAN SARAF TIRUAN UNTUK PERAMALAN BEBAN LISTRIK 193-200

(Combination Model of SARIMA and Artificial Neural Network for Electrical Load Forecasting)

Mega Silfiani

MODEL AUTOREGRESSIVE INTEGRATED MOVING AVERAGE (ARIMA) UNTUK MERAMALKAN INFLASI INDONESIA 201-208

(Autoregressive Integrated Moving Average (ARIMA) Model to Forecast Inflation In Indonesia)

Yonlib Weldri Arnold Nanlohy, Samsul Bahri Loklomin