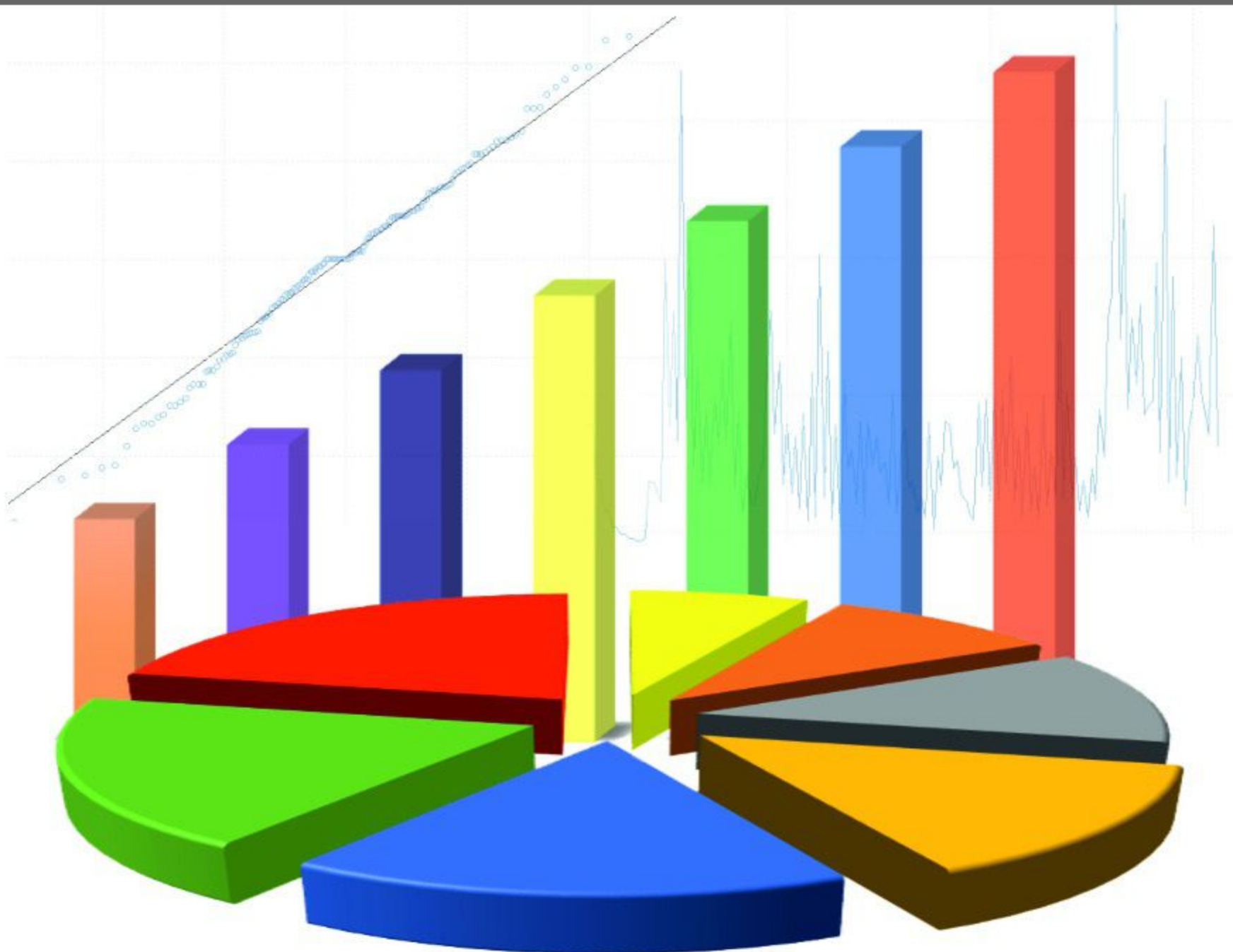


# Variance

*Journal of Statistics and Its Applications*

P-ISSN: 2685-8738 E-ISSN: 2685-872X

Volume 1 Nomor 2 | Desember 2019



**PROGRAM STUDI STATISTIKA**

**JURUSAN MATEMATIKA**

**FAKULTAS MATEMATIKA DAN ILMU PENGETAHUAN ALAM**

**UNIVERSITAS PATTIMURA**



p-ISSN: 2685-8738 e-ISSN: 2685-872X

Volume 1 Nomor 2 | Desember 2019

***Editor in Chief***

Ferry Kondo Lembang, S.Si., M.Si

Norisca Lewaherilla, S.T., M.Si

***Expert Editor Board***

Prof. Dr. rer.nat. Dedi Rosadi, S.Si., M.Sc. (Universitas Gajah Mada (UGM), Yogyakarta)

Prof. Drs. Muhammad Arif Tiro, B.A., M.Pd., M.Sc. (Universitas Negeri Malang (UNM), Malang)

Dr. Suhartono, M.Sc. (Institut Teknologi Sepuluh November (ITS), Surabaya)

Dr. Margaretha Ari Anggorowati, M.T. (Politeknik Statistika, Jakarta)

Sapto Wahyu Indratno, S.Si., M.Sc., Ph.D. (Institut Teknologi Bandung (ITB), Bandung)

Dr. rer.pol. Heri Kuswanto, M.Si. (Institut Teknologi Sepuluh November (ITS), Surabaya)

Dr. Henry Junus Wattimanela, M.Si. (Universitas Pattimura (Unpatti), Ambon)

Yopi Andry Lesnussa, S.Si., M.Si. (Universitas Pattimura (Unpatti), Ambon)

***Managing and Section Editor***

Muhammad Yahya Matdoan, S.Si., M.Si

***Copy Editor and Proofreader***

Y. W. A. Nanlohy, S.Si., M.Si

***Graphic Designer***

Lexy Jansen Sinay, S.Si., M.Sc

***Secretariat***

Gabriella Haumahu, S.Si., M.Stat

**VARIANCE: Journal of Statistics and Its Applications** is an open-access journal for the scientific publication media, which published two times annually in June and December. The focuses of this journal are official statistics, biostatistics, econometrics, business, and industrial statistics, demography, time series, spatial, data mining, computation statistics, and actuarial science. The printed version of this journal is p-ISSN 2685-8738 and the online version is e-ISSN 2685-872X published on website <https://ojs3.unpatti.ac.id/index.php/variance/> by using OJS.

**Published by:**

Statistics Study Programme

Department of Mathematics

Faculty of Mathematics and Natural Sciences

University of Pattimura

Website: <http://matematika.fmipa.unpatti.ac.id>



Volume 1 Nomor 2 | Desember 2019

**PENELITIAN**

<p><i>LATENT CLASS CLUSTER ANALYSIS</i> UNTUK                  PENGELOMPOKAN KABUPATEN/KOTA DI PROVINSI JAWA                  TENGAH BERDASARKAN INDIKATOR INDEKS                  PEMBANGUNAN MANUSIA 2017  <i>Latent Class Cluster Analysis for Grouping of Districts/Cities in                  Central Java province Based on Human Development Index                  Indicators 2017</i></p>	<p>Atika Nurani Ambarwati</p>	<p>46-54</p>
<p>KLASIFIKASI STATUS PEMBAYARAN PREMI                  MENGGUNAKAN ALGORITMA <i>NEIGHBOR WEIGHTED K-                  NEAREST NEIGHBOR</i> (NWKNN)                  (STUDI KASUS: PT. BUMIPUTERA KOTA SAMARINDA)  <i>Classification of Premium Payment Status Using Neighbor Weighted                  K-Nearest Neighbor (NWKNN) Algorithm (Case Study: PT.                  Bumiputera Kota Samarinda)</i></p>	<p>Grassella                  Ika Purnamasari                  Fidia Deny Tisna Amijaya</p>	<p>56-63</p>
<p>MISKLASIFIKASI PENJURUSAN MAHASISWA FMIPA                  UNIVERSITAS PATTIMURA TAHUN AKADEMIK 2016/2017                  MENGGUNAKAN METODE ANALISIS DISKRIMINAN                  BERGANDA  <i>Misclassification of Majoring Students of 2016/2017 FMIPA's                  Students in Pattimura University Using Multiple Discriminant                  Analysis Method</i></p>	<p>Ferry Kondo Lembang                  Mozart Winston Talakua                  Mega Selvi Hasanudin</p>	<p>64-74</p>
<p>ANALISIS SISTEM ANTRIAN PADA DIREKTORAT                  KEUANGAN UNIVERSITAS HALMAHERA  <i>Analysis Of The Queue System In The Directorate Of Finance Of                  Halmahera University</i></p>	<p>Meidy Kaseside                  Ravenska Tiffany Lahengking                  Mario Nikolaus Dalengkade</p>	<p>76-80</p>
<p>MODEL FUNGSI TRANSFER MULTI INPUT UNTUK                  PERAMALAN CURAH HUJAN DI KOTA SURABAYA  <i>Multi Input Transfer Function Model For Forecasting Rainfall In                  The City Of Surabaya</i></p>	<p>Yonlib W. A. Nanlohy                  Brodjol Sutijo S. U                  Santi Wulan P</p>	<p>82-92</p>