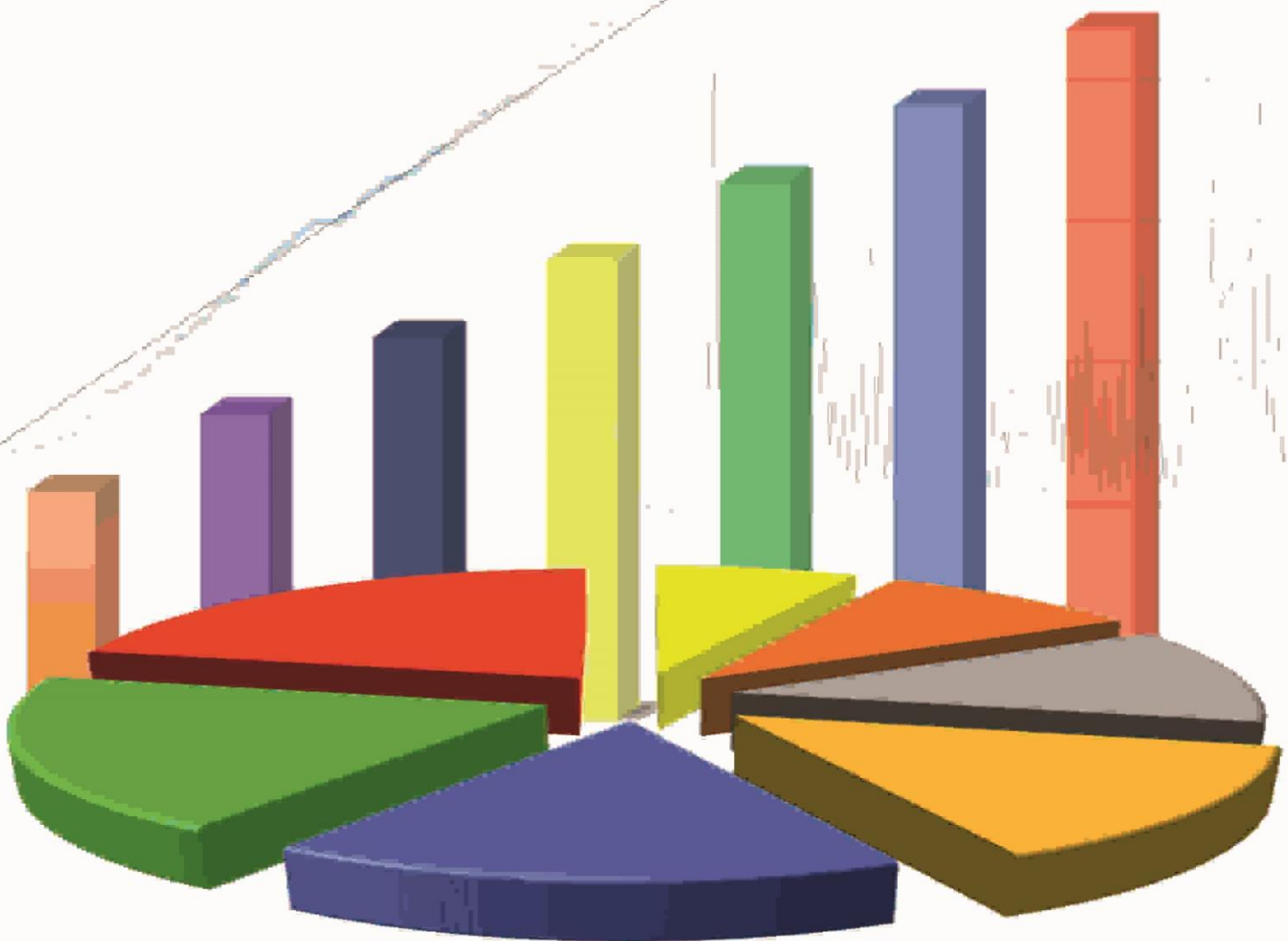


Variance

Journal of Statistics and Its Applications

P-ISSN: 2685-8738 E-ISSN: 2685-872X

Volume 3 Nomor 1 | Juni 2021



PROGRAM STUDI STATISTIKA

JURUSAN MATEMATIKA

FAKULTAS MATEMATIKA DAN ILMU PENGETAHUAN ALAM

UNIVERSITAS PATTIMURA



P-ISSN: 2685-8738 E-ISSN: 2685-872X
Volume 3 Nomor 1 | Juni 2021

Editor in Chief

Ferry Kondo Lembang, S.Si., M.Si
Norisca Lewaherilla, S.T., M.Si

Expert Editor Board

Prof. Dr. rer.nat. Dedi Rosadi, S.Si., M.Sc. (Universitas Gajah Mada (UGM), Yogyakarta)
Prof. Drs. Muhammad Arif Tiro, B.A., M.Pd., M.Sc. (Universitas Negeri Malang (UNM), Malang)
Dr. Suhartono, M.Sc. (Institut Teknologi Sepuluh November (ITS), Surabaya)
Dr. Margaretha Ari Anggorowati, M.T. (Politeknik Statistika, Jakarta)
Sapto Wahyu Indratno, S.Si., M.Sc., Ph.D. (Institut Teknologi Bandung (ITB), Bandung)
Dr. rer.pol. Heri Kuswanto, M.Si. (Institut Teknologi Sepuluh November (ITS), Surabaya)
Dr. Henry Junus Wattimanela, M.Si. (Universitas Pattimura (Unpatti), Ambon)
Yopi Andry Lesnussa, S.Si., M.Si. (Universitas Pattimura (Unpatti), Ambon)

Managing and Section Editor

Muhammad Yahya Matdoan, S.Si., M.Si

Copy Editor and Proofreader

Yonlib Weldri Arnold Nanlohy, S.Si., M.Si

Graphic Designer

Lexy Janzen Sinay, S.Si., M.Sc

Secretariat

Gabriella Haumahu, S.Si., M.Stat

VARIANCE: Journal of Statistics and Its Applications is an open-access journal for the scientific publication media, which published two times annually in June and December. The focuses of this journal are official statistics, biostatistics, econometrics, business, and industrial statistics, demography, time series, spatial, data mining, computation statistics, and actuarial science. The printed version of this journal is p-ISSN 2685-8738 and the online version is e-ISSN 2685-872X published on website <https://ojs3.unpatti.ac.id/index.php/variance/> by using OJS.

Published by:

Statistics Study Programme
Department of Mathematics
Faculty of Mathematics and Natural Sciences
University of Pattimura
Website: <http://matematika.fmipa.unpatti.ac.id>

Daftar Isi

ANALISIS ANGKA KEMATIAN BAYI DI KABUPATEN HALMAHERA UTARA DENGAN METODE REGRESI NONPARAMETRIK <i>SPLINE TRUNCATED</i> (<i>Modelling of Dependence to Construct a Frank Copula Bivariate Distribution on Discrete Marginal Data by Jitters and Standard Normal Transformation</i>) Meidy Kaseside, Samsul Bahri Loklomin	1-5
PEMODELAN DEMAM BERDARAH DENGUE DENGAN METODE REGRESI LOGISTIK BINER DI KOTA TOBELO <i>Modeling Dengue Hemorrhagic Fever Using Binary Logistic Regression Method in Tobelo City</i> Trifena Punana Lesnussa, Samsul Bahri Loklomin	7-14
PENERAPAN DIAGRAM KONTROL G PADA PENGENDALIAN KECACATAN PRODUK KAYU LAPIS DI PT. SEGARA TIMBER MANGKUJENANG SAMARINDA TAHUN 2019 (<i>The Implementation of G Control Chart On Defects Control Of Plywood Products In PT. Segara Timber Mangkujenang Samarinda In 2019</i>) Nur Eka Fitria, Ika Purnamasri, Sri Wahyuningsih	15-27
REGRESI PANELTINGKAT PENGANGGURAN TERBUKA KABUPATEN/KOTA PROVINSI NUSA TENGGARA BARAT (<i>Panel Regression Of Open Unemployment Rate District/City Of Nusa Tenggara Barat Province</i>) Safa'at Yulianto, Dinar Ade Kurniawan	29-36
ANALISIS PEMETAAN SARANA DAN PRASARANA PENDIDIKAN DI KABUPATEN MALUKU TENGAH DENGAN MENGGUNAKAN METODE MULTIDIMENSIONAL SCALING (<i>Mapping Analysis of Educational Facilities and Infrastructure in Central Maluku Regency Using Multidimensional Scaling Methods</i>) Dedy S. Lasamahu, Ferry Kondo Lembang, Lexy Janzen Sinay	37-47