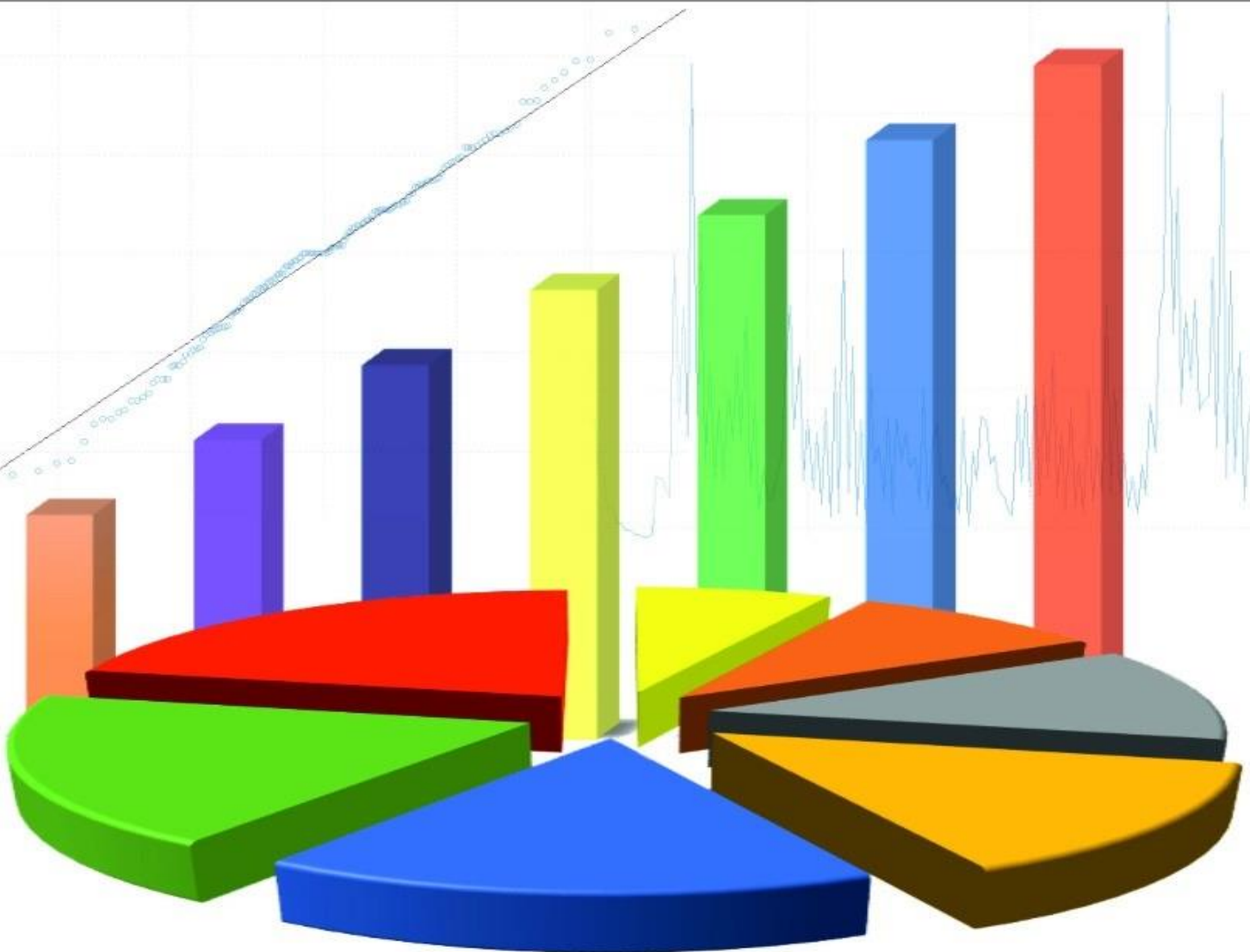


Variance

Journal of Statistics and Its Applications

P-ISSN: 2685-8738 E-ISSN: 2685-872X

Volume 3 Nomor 2 | Desember 2021



PROGRAM STUDI STATISTIKA

JURUSAN MATEMATIKA

FAKULTAS MATEMATIKA DAN ILMU PENGETAHUAN ALAM

UNIVERSITAS PATTIMURA



P-ISSN: 2685-8738 E-ISSN: 2685-872X
Volume 3 Nomor 2 | Desember 2021

Editor in Chief

Ferry Kondo Lembang, S.Si., M.Si
Norisca Lewaherilla, S.T., M.Si

Expert Editor Board

Prof. Dr. rer.nat. Dedi Rosadi, S.Si., M.Sc. (Universitas Gajah Mada (UGM), Yogyakarta)
Prof. Drs. Muhammad Arif Tiro, B.A., M.Pd., M.Sc. (Universitas Negeri Malang (UNM), Malang)
Dr. Suhartono, M.Sc. (Institut Teknologi Sepuluh November (ITS), Surabaya)
Dr. Margaretha Ari Anggorowati, M.T. (Politeknik Statistika, Jakarta)
Sapto Wahyu Indratno, S.Si., M.Sc., Ph.D. (Institut Teknologi Bandung (ITB), Bandung)
Dr. rer.pol. Heri Kuswanto, M.Si. (Institut Teknologi Sepuluh November (ITS), Surabaya)
Dr. Henry Junus Wattimanela, M.Si. (Universitas Pattimura (Unpatti), Ambon)
Yopi Andry Lesnussa, S.Si., M.Si. (Universitas Pattimura (Unpatti), Ambon)

Managing and Section Editor

Muhammad Yahya Matdoan, S.Si., M.Si

Copy Editor and Proofreader

Yonlib Weldri Arnold Nanlohy, S.Si., M.Si

Graphic Designer

Lexy Janzen Sinay, S.Si., M.Sc

Secretariat

Gabriella Haumahu, S.Si., M.Stat

VARIANCE: Journal of Statistics and Its Applications is an open-access journal for the scientific publication media, which published two times annually in June and December. The focuses of this journal are official statistics, biostatistics, econometrics, business, and industrial statistics, demography, time series, spatial, data mining, computation statistics, and actuarial science. The printed version of this journal is p-ISSN 2685-8738 and the online version is e-ISSN 2685-872X published on website <https://ojs3.unpatti.ac.id/index.php/variance/> by using OJS.

Published by:

Statistics Study Programme
Department of Mathematics
Faculty of Mathematics and Natural Sciences
University of Pattimura
Website: <http://matematika.fmipa.unpatti.ac.id>

Daftar Isi

PENGELOMPOKKAN TINGKAT HARGA CABAI RAWIT BERDASARKAN PROVINSI DI INDONESIA MENGGUNAKAN ALGORITMA K-MEANS CLUSTERING <i>(Grouping Chillies Price Levels Based On Province In Indonesia Using K-Means Clustering Algorithm)</i> Citra Fathia Palembang, Septianti Permatasari Palembang	48-60
EVALUASI METODE FUZZY TIME SERIES CHENG DAN RUEY CHYN TSAUR <i>(Evaluation Of Cheng and Ruey Chyn Tsaurs Fuzzy Time Series Method)</i> Fatkhurokhman Fauzi, Dwi Agustina, Indah Manfaati Nur	61-72
PERAMALAN TINGKAT KEMISKINAN DI PROVINSI MALUKU MENGGUNAKAN METODE EXPONENTIAL SMOOTHING <i>(Forecasting of Level Poverty in Maluku Province Using Exponential Smoothing Method)</i> Angel Manuputty, Dephie C. Latumahina, Megawati Z. Waliulu, Rahania Patiekon, Rahania Patiekon	73-80
IMPLEMENTASI MODEL AUTOREGRESSIVE INTEGRATED MOVING AVERAGE (ARIMA) UNTUK PERAMALAN JUMLAH PENUMPANG KAPAL LAUT DI PELABUHAN AMBON <i>(Implementation of the Autoregressive Integrated Moving Average (ARIMA) Model for Forecasting the Number of Sea Ship Passenger at Ambon Port)</i> Ade Irma La Murdani, Yonlib Weldri Arnold Nanlohy	81-90
PENGELOMPOKAN SATUAN KERJA PROVINSI MALUKU BERDASARKAN INDIKATOR KINERJA PELAKSANAAN ANGGARAN MENGGUNAKAN ANALISIS CLUSTER K-MEANS (STUDI KASUS: KPPN AMBON TAHUN 2021) <i>(Grouping of Work Units of Maluku Province Based On Budget Implementation Performance Indicators Using K-Means Cluster Analysis (Case Study: KPPN Ambon at 2021))</i> Unique Desyrrre Alexandrie Resiloy, Wahyuni Aprili, Inayah Putri Solong	91-98